

Population of the Town of Southbridge

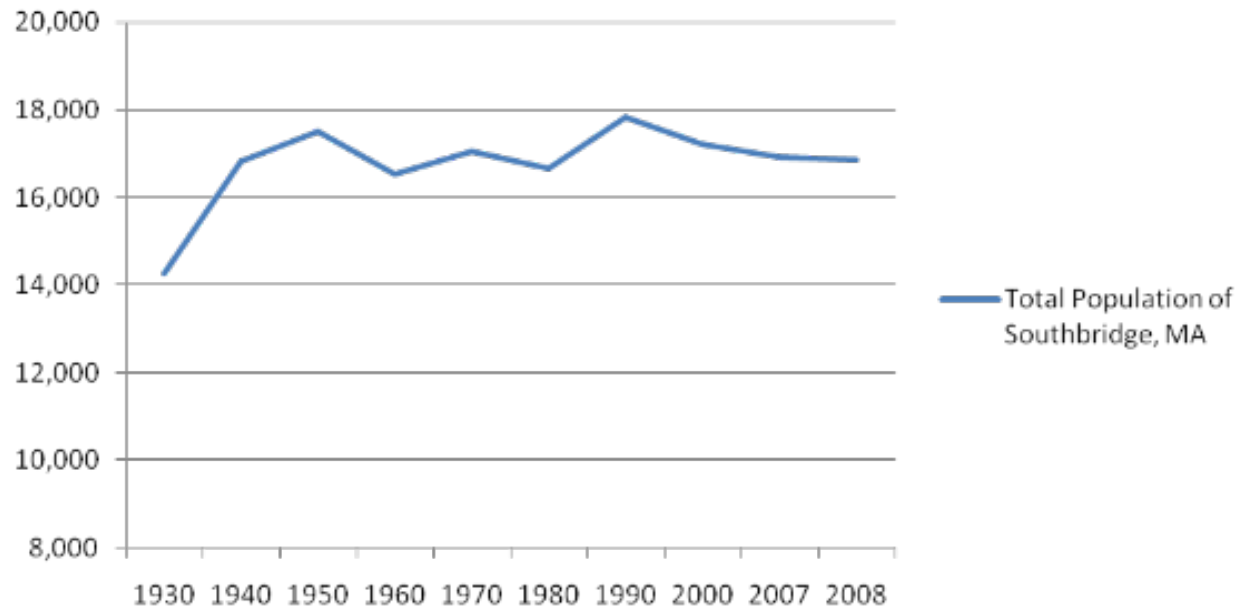
Year	1930*	1940*	1950*	1960*	1970	1980	1990	2000	2007	2008†	2009†
Population	14,264	16,825	17,519	16,523	17,057	16,665	17,816	17,214	16,926	16,842	17,403

†Data from 2008 Town of Southbridge Street List

*1960 US Census, MA general characteristics

Unless otherwise noted, all other data is from the census of that year as reported in the Massachusetts Municipal Profile series.

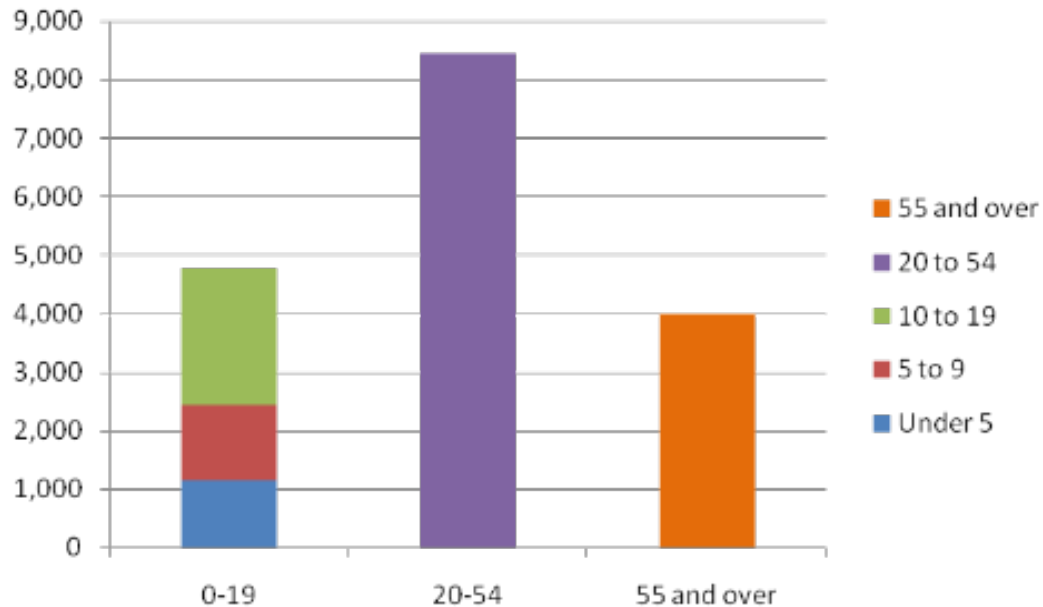
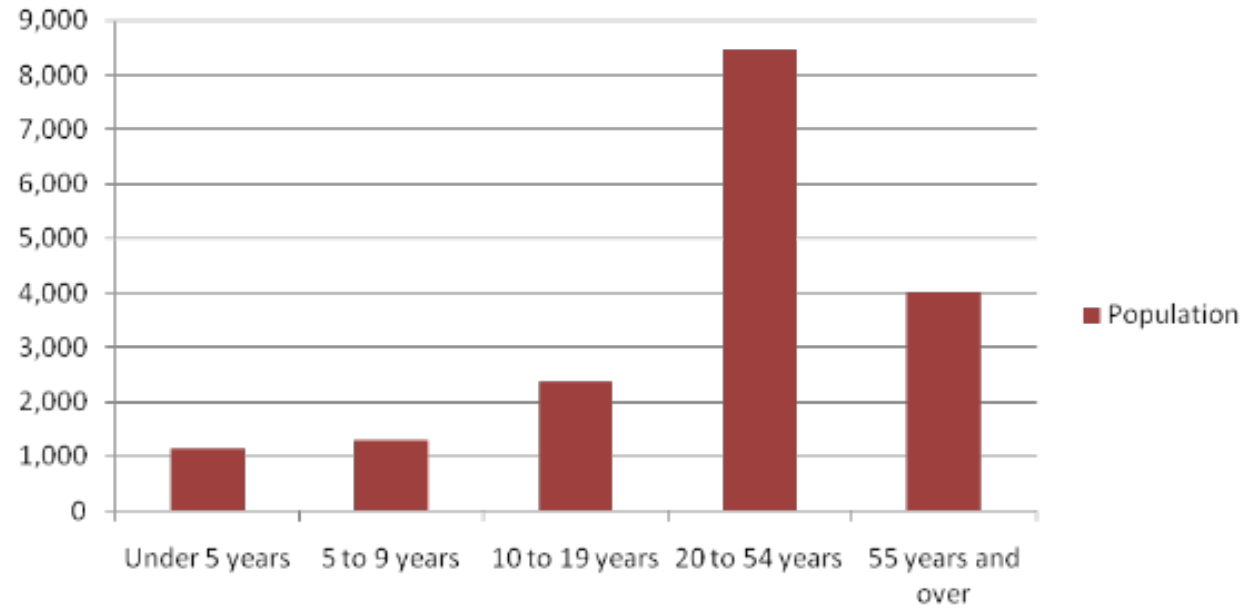
Total Population of Southbridge, MA



Population by Age Group

Age Bracket	Pop 2000	Pop Proj '10
Under 5 years	1,138	1,139
5 to 9 years	1,284	1,139
10-14 years	1,228	1,112
15 to 19 years	1,127	1,186
20 to 54 years	8,438	7,125
55 years and over	3,999	4,464
55-65	1,399	1,975
65-75	1,114	1,177
75+	1,486	1,312

Population



(All Data from the 2000 United States Census)

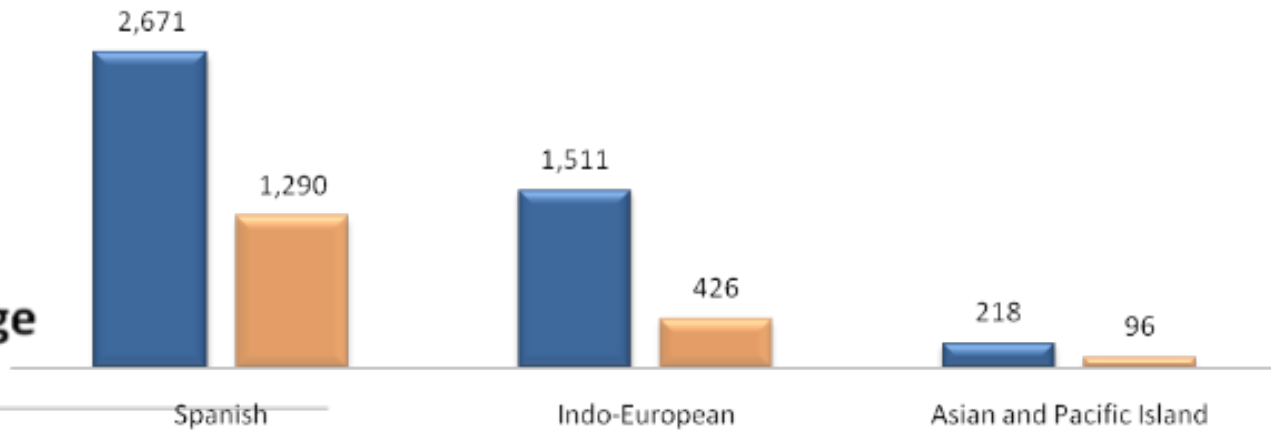
Language in Southbridge (population over 5 years)

(All Data from the 2000 United States Census)

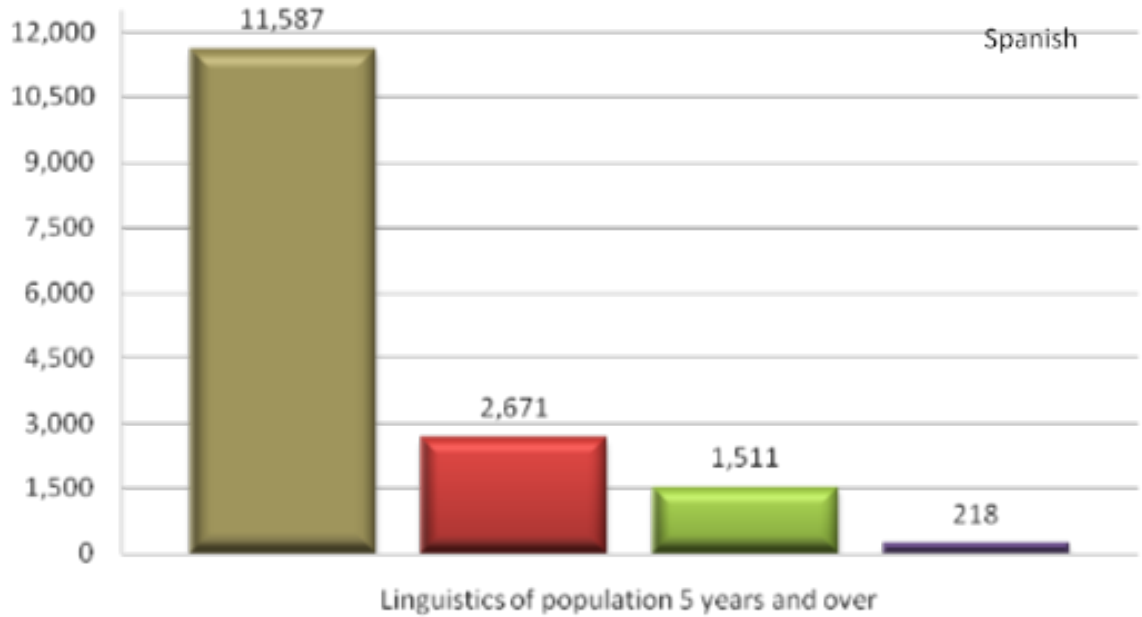
Total Population 5 years and older: 15,995
 Speak only English: 11,587
 Speaks non-English: 4,408
 English less than "very well": 1,812

Number of Foreign Language Speakers who speak English less than "very well"

■ Total number of speakers ■ Number of speakers who speak English less than "very well"

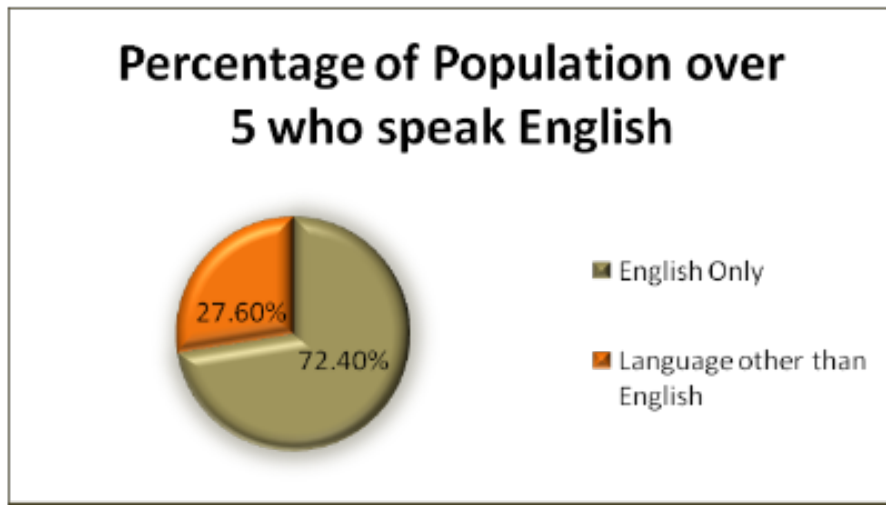


Language in Southbridge



■ English Only ■ Spanish ■ Indo-European ■ Asian and Pacific Island

Percentage of Population over 5 who speak English

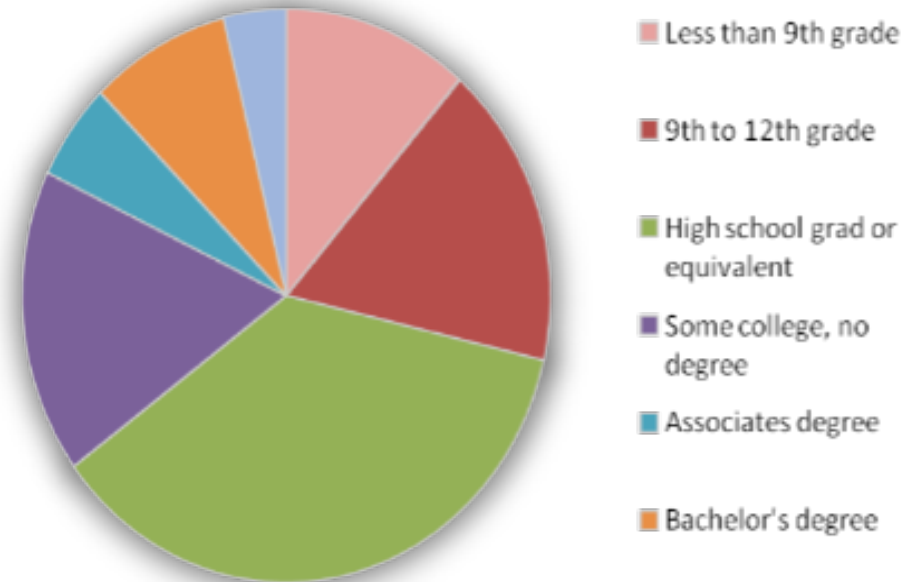


■ English Only
 ■ Language other than English

Southbridge's Educational Attainment

Taken from the 2000 United States Census Data		
EDUCATIONAL ATTAINMENT	Number	Percent
Population 25 years and over	11,291	100.0
Less than 9th grade	1,289	11.4
9th to 12th grade, no diploma	1,942	17.2
High school graduate (includes equivalency)	4,083	36.2
Some college, no degree	1,945	17.2
Associate degree	626	5.5
Bachelor's degree	976	8.6
Graduate or professional degree	430	3.8
Percent high school graduate or higher	71.4	(X)
Percent bachelor's degree or higher	12.5	(X)
Homeschooled Students	17	

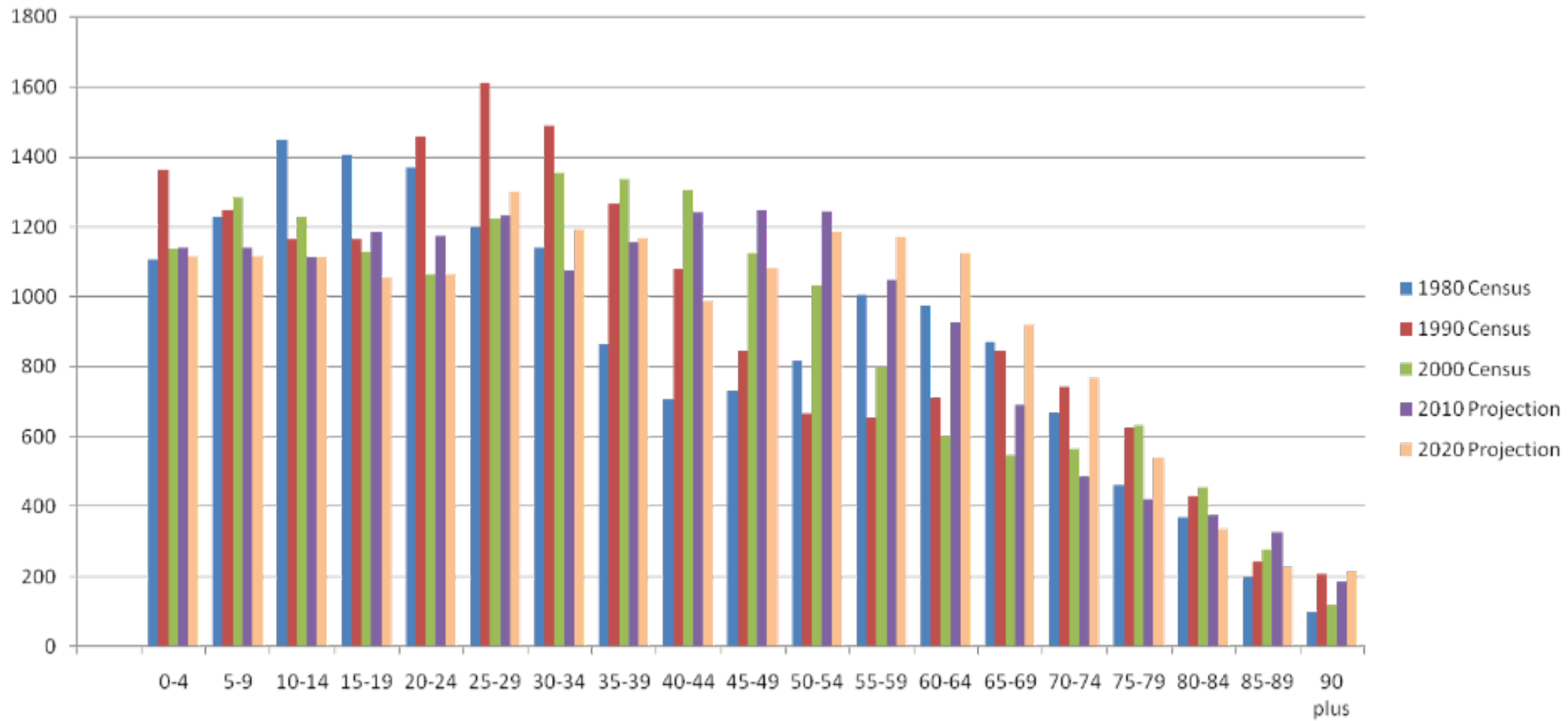
Educational Attainment by Population Percentage



Data Extrapolated from the MISER Population Projections for Southbridge

(All) Age Group	1980 Census	1990 Census	2000 Census	2010 Projection	2020 Projection
0-4	1,106	1,362	1,138	1,139	1,114
5-9	1,229	1,247	1,284	1,139	1,115
10-14	1,448	1,165	1,228	1,112	1,112
15-19	1,405	1,165	1,127	1,186	1,053
20-24	1,369	1,458	1,064	1,174	1,063
25-29	1,198	1,610	1,221	1,233	1,299
30-34	1,140	1,489	1,355	1,076	1,191
35-39	864	1,265	1,336	1,155	1,168
40-44	706	1,079	1,306	1,240	987
45-49	731	845	1,124	1,247	1,081
50-54	817	666	1,032	1,244	1,185
55-59	1,006	653	797	1,049	1,170
60-64	974	711	602	926	1,124
65-69	872	848	548	690	919
70-74	669	743	566	487	766
75-79	461	626	634	421	542
80-84	369	430	456	376	335
85-89	199	246	277	328	230
90 plus	102	208	119	187	215
Total	16,665	17,816	17,214	17,409	17,669

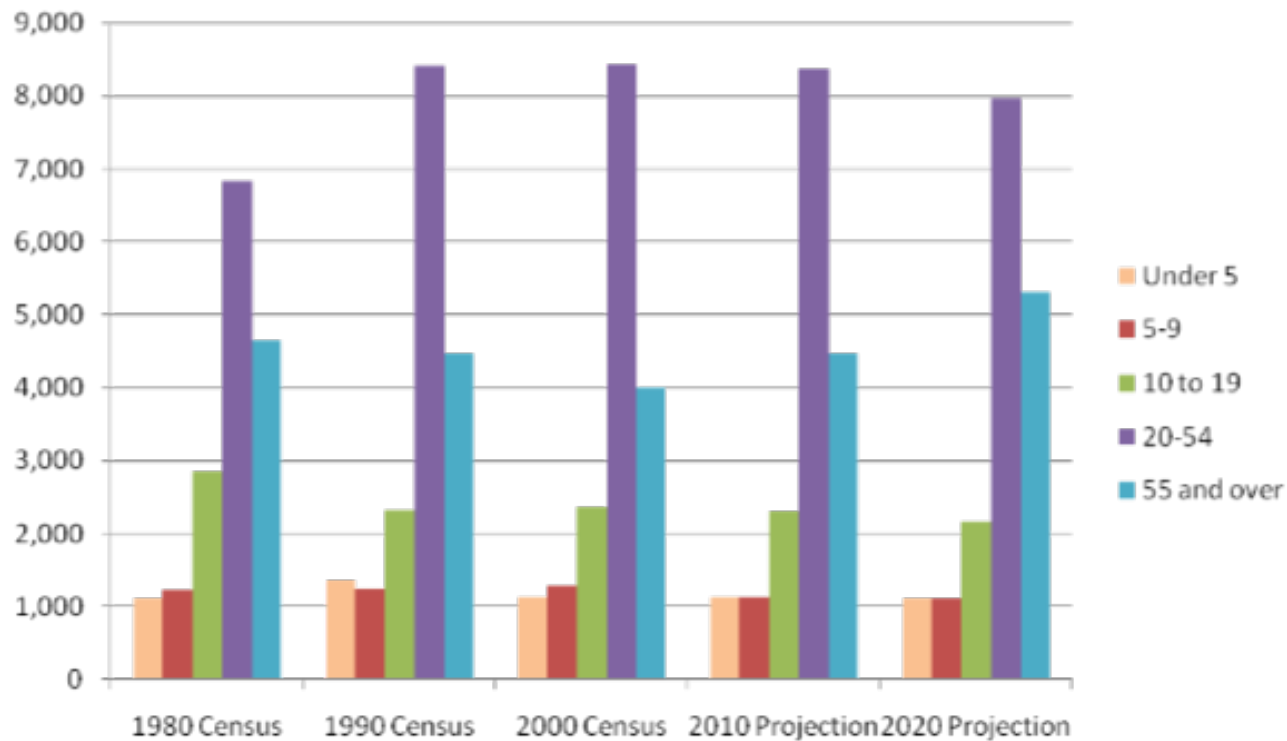
Data Extrapolated from the MISER Population Projections for Southbridge, Cont.



Data Extrapolated from the MISER Population Projections for Southbridge, Cont.

Population by Age Over Time

Age Group	1980 Census	1990 Census	2000 Census	2010 Projection	2020 Projection
Under 5	1,106	1,362	1,138	1,139	1,114
5-9	1,229	1,247	1,284	1,139	1,115
10 to 19	2,853	2,330	2,355	2,298	2,165
20-54	6,825	8,412	8,438	8,369	7,974
55 and over	4,652	4,465	3,999	4,464	5,301



Disabled Population in Southbridge

Disability Status Of The Civilian Non-Institutionalized Population		
	Number	Percent
Population 5 to 20 years	3,814	100.0
With a disability	308	8.1
No disability	3,506	91.9
Population 21 to 64 years		
	9,546	
With a disability	2,324	24.3
<i>Percent employed</i>	49	
No disability	7,222	75.7
<i>Percent employed</i>	78.7	
Population 65 years and over		
	2,444	100.0
With a disability	1,113	45.5
No disability	1,331	54.5
TOTAL population over 5		
	15,804	100.0
With a disability	3,745	23.7
No disability	12,059	76.3

(All data from 2000 US Census)

Hispanic Population Breakdown: Then and Now

	1980		2000	
	Number	Percent	Number	Percent
Total Population	16,665	100.00	17,214	100.00
Hispanic/Latino (of any race)	1,033	6.2	3,472	20.2
Mexican	14	0.08	62	0.4
Puerto Rican	947	5.7	3,033	17.6
Cuban	3	0.02	26	0.2
Other Hispanic/Latino	69	0.4	351	2.0
NOT Hispanic/Latino	15,632	93.8	13,742	79.8
White alone	15,535	93.2	13,028	75.7

(Data from 1980 US Census & 2000 US Census)

Teen Pregnancy

Statistics from 2/16/2009 SEN Article

Year	# of Teen Births	Rate
1997	48	87.4%
2007	43	77.1%

*From a teen population (male and female, 10-19, 2000 census) of 2,355.

In 2008, Southbridge is ranked 7th

2008 teen pregnancy rates

Massachusetts towns with greatest number of teen births

	Number of teen births	Teen births per 1,000*
1. Holyoke	174	115.3
2. Chelsea	97	97.0
3. Lawrence	245	80.9
4. Gardner	38	63.9
5. New Bedford	186	62.9
6. Springfield	373	61.4
7. Southbridge	34	60.9
8. Fall River	159	56.2
9. Lynn	164	53.2
10. Revere	53	50.3
11. Lowell	60	48.7
12. Pittsfield	193	47.2
13. Brockton	155	42.6
14. Everett	43	40.6
15. Fitchburg	60	38.4
16. Worcester	256	36.4
17. Chicopee	59	33.9
18. Salem	42	32.4
19. Haverhill	61	32.0
20. Boston	565	28.6
State	4,583	20.1

* Females ages 15-19

Source: State Dept. of Health and Human Services

T&G Staff/DON LANDGREN JR.